

TruckMonitorMini

Product overview

TruckMonitorMini is a monitor for custom vehicle builders and body builders based on the J1939 body builder CAN interface or FMS interface. All common messages according to J1939 are supported. Messages sent by the truck are interpreted and shown on the display.

Due to minimal dimensions it is dedicated for mounting as an additional monitoring unit on the body of trucks. If the truck supports CAN vehicle weight messages the weight of the truck and the trailer can be shown.



CAN bus data illustration

Left side: Basic ifm CR0451

Center: TruckMonitorMini XL – Basic ifm CR0452

Right side: Basic DSE M835

Page – signal overview :

Page 1

Coolant temperature

Fuel level

M835: optional
engine speed

Page 2

Oil pressure

Oil temperature

M835: optional
engine speed

Page 3

Engine speed

Engine hours

Page 4

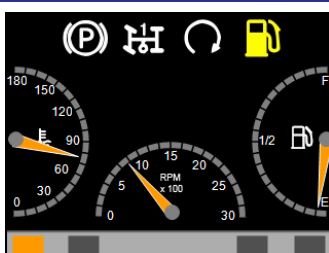
Weight of the truck

Weight of the trailer

All pages

Parking brake, PTO state, engine state, fuel level warning

Display illustrations:



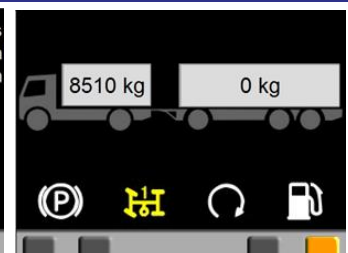
Page 1: M835 view – 3 meter-signals



Page 2: Signal standard view



Page 3: Signal standard view



Page 4: Truck-Trailer weight

Alle Daten bei 25°C Umgebungstemperatur, falls nicht anders angegeben. / All data at nominal input and 25° C ambient temperature, if not marked otherwise. • Alle Daten dienen nur Informationszwecken und sind nicht als zugesicherte Eigenschaften aufzufassen. / All data for information purposes only, no assured characteristics. • Technische Änderungen ohne vorherige Ankündigung sowie Irrtümer vorbehalten. / Technical modifications without notice and errors reserved. • Belastung mit Extremwerten über einen längeren Zeitraum kann die Zuverlässigkeit beeinflussen. / Strain with extreme values for a longer period may affect the reliability. • Alle Trademarks und Logos sind Eigentum der jeweiligen Unternehmen. / All trademarks and logos are property of the concerning companies. © b-plus mobile control GmbH • Dec.-21 • Version: 1.7

Hardware specification



Order no:	B12100-TMM-001-0451	B12100-TMM-001-0452	B12100-TMM-001-M835
	B12100-TMM-001-9221		
Display model:	ifm CR0451 ifm CR9221 - Clearglass	ifm CR0452	DSE M835
Display size:	2,8"	4,3"	3,5"
Resolution:	320 x 240px	480 x 272 px	320 x 240px
Dimension (BxHxW in mm):	87,5 x 87,5 x 37,7	109,5 x 124,5 x 40,5	112,5 x 115 x 49
Protection class:	IP 67 (front side, when installed, otherwise IP 65)	IP 67 (front side, when installed, otherwise IP 65)	IP67
Qualification:	CE, e-mark	CE, e-mark	CE
Operating temperature:	-30 .. 80°C	-30 .. 80°C	-40°C .. 85°C
Operating voltage:	8-32V DC	8-32V DC	8-35V DC
CAN protocol:	SAE J1939 – ISO 11898 – HighSpeed-CAN / 5V Basic / 250 kBaud		
Supported truck types:	<p>Mercedes – Benz: Aufbau-CAN, Telematic-Interface MAN: Aufbau-CAN / FMS-Interface Scania: Ext. CAN-Bus Volvo: BB-CAN DAF: BB-CAN Iveco: CAN-Bus Renault: BB-CAN FMS: FMS-Standard <i>And others with standard SAE J1939</i></p>		
Accessories:			
Connection:	B12090-CPS-002-0500 M12 Cable socket tilted 5m 4pole CAN-Cord with 120 Ohm Resistor (other lengths available)		4001954 Socket incl. pins DEUTSCH DT16-A, 18pin
Mounting frame:	4000333 Mounting frame for flat front panel mounting (EC0403)	4001970 Mounting frame for flat front panel mounting (EC0404)	
RAM-Mounting:	4000334 RAM-Mount Set 1" (EC0405)	4001979 RAM-Mount Set 1" (EC0406)	4001951 RAM Mount + Adapter cover M835