

b-ISOBUS AUX-N Gateway

Product overview

The b-ISOBUS AUX-N Gateway offer a quick control of the AUX-N functions provided by the job controller on not ISOBUS compatible HMIs. The keys can be assigned directly on the UT / virtual terminal.

A wide range of supported joysticks and keypad modules enables a perfect match to your application. Other customer specific HMIs can be integrated.

The ISOBUS InCab connector provides a toolless connection within seconds. Other cabling options are available.



Illustration 1: b-ISOBUS AUX-N Gateway



Illustration 2: System overview

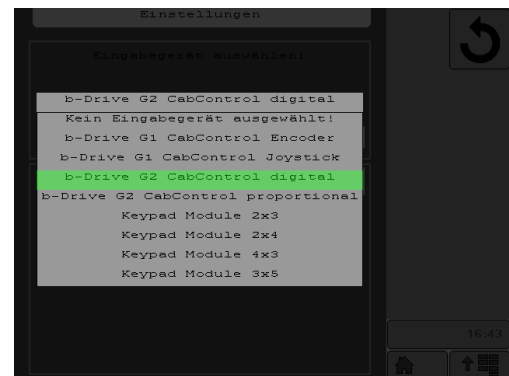


Illustration 3: Configuration directly at the VT

HMI modules



**b-Drive
Cab Control
joystick**



**b-Drive
Cab Control
encoder**



**b-Drive G2
Cab Control
digital
joystick**



**b-Drive G2
Cab Control
proportional
joystick**



**Keypad
modules**



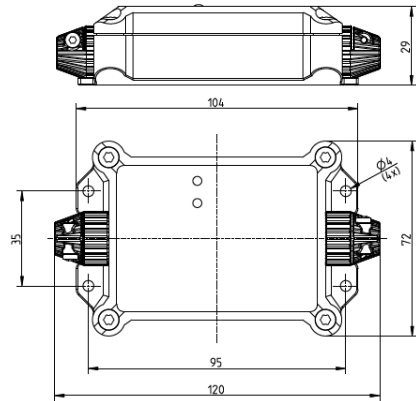
**Customer specific
CAN joysticks /
keypads**

Alle Daten bei 25°C Umgebungstemperatur, falls nicht anders angegeben. / All data at nominal input and 25° C ambient temperature, if not marked otherwise. ■ Alle Daten dienen nur Informationszwecken und sind nicht als zugesicherte Eigenschaften aufzufassen. / All data for information purposes only, no assured characteristics. ■ Technische Änderungen ohne vorherige Ankündigung sowie Irrtümer vorbehalten. / Technical modifications without notice and errors reserved. ■ Belastung mit Extremwerten über einen längeren Zeitraum kann die Zuverlässigkeit beeinflussen. / Strain with extreme values for a longer period may affect the reliability. ■ Alle Trademarks und Logos sind Eigentum der jeweiligen Unternehmen. / All trademarks and logos are property of the concerning companies. © b-plus mobile control GmbH • Jun-21 • Version: 1.3

Technical data

Operating temperature	-40 ... +80°C
Protection class	IP67
Weight	0,095 kg
Qualification	CE / E-mark / AEF ISO11783
Dimensions	104 x 29 x 72 mm (WxHxD)
Housing	Plastic PA12, black
Bus interfaces	2 CAN-Bus (High-Speed) acc. ISO 11898-2
Power supply	8 ... 32 V DC
Status-LEDs	LED1: Status communication LED2: Status power

Dimension



Configuration options



ISOBUS – Left side

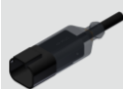
HMI module – Right side



InCab adapter with **170cm** cable
B20400-MIS-101-0**170**



Deutsch **4pin**, male, **200cm** cable
B20400-MIS-104-0**200**



Deutsch **4pin**, male, **30cm** cable
B20400-MIS-104-00**30**

Open end cable **Ycm**
B20400-MIS-100-**YYYY**

Deutsch **4pin**, female, **200cm** cable

B20400-MIS-204-0**200**
e.g. for b-Drive CabControl G1 & G2



Deutsch **6pin**, female, **200cm** cable

B20400-MIS-206-0**200**
e.g. for KeypadModules



Open end cable **Ycm**

B20400-MIS-200-**YYYY**

Order-no.

name

B20400-AGW-001-0001	b-ISOBUS AUX-N Gateway – without cables
B20400-MIS-10X-YYYY	Cable ISOBUS – left side – see configuration table
B20400-MIS-20X-YYYY	Cable HMI module – right side – see configuration table
4000107	b-Drive CabControl G1, 5 buttons, 1 encoder with pushbutton
4000109	b-Drive CabControl G1, 5 buttons, 1 joystick encoder with pushbutton
B12720-BDR-011-CW00	b-Drive CabControl G2, 6 buttons, digital joystick with encoder and pushbutton
B12720-BDR-021-CW00	b-Drive CabControl G2, 6 buttons, proportional joystick with encoder and pushbutton
B12500-KMM-001-2Z4T	KeypadModule - IP68, 1 000 000 cycles, -40..+85°C, 9..32 V DC 8 buttons: 2 rows each 4 buttons 12 buttons: 4 rows each 3 buttons 15 buttons: 3 rows each 5 buttons
B12500-KMM-001-4Z3T	
B12500-KMM-001-3Z5T	

Alle Daten bei 25°C Umgebungstemperatur, falls nicht anders angegeben. / All data at nominal input and 25° C ambient temperature, if not marked otherwise. ▪ Alle Daten dienen nur Informationszwecken und sind nicht als zugesicherte Eigenschaften aufzufassen. / All data for information purposes only, no assured characteristics. ▪ Technische Änderungen ohne vorherige Ankündigung sowie Irrtümer vorbehalten. / Technical modifications without notice and errors reserved. ▪ Belastung mit Extremwerten über einen längeren Zeitraum kann die Zuverlässigkeit beeinflussen. / Strain with extreme values for a longer period may affect the reliability. ▪ Alle Trademarks und Logos sind Eigentum der jeweiligen Unternehmen. / All trademarks and logos are property of the concerning companies. © b-plus mobile control GmbH • Jun-21 • Version: 1.3