

b-ISOBUS Cable

Product overview

This cable is the optimal connection cable for ISOBUS implements. It is suitable for the communication and the supply of electronics of the implement.

Overmolded connector

Highers the protection class to IP67

Deposit for the cover plate of the socket

Captive preductive cover

No cable manufacture necessary

The insert molded cable is available in different variants and lengths and error-prone cable manufacture

Fitting to the ambient conditions

Robust cable coating (PUR) against Oil, UV or greases

Various wire cross sections

Cross sections of 6, 10 or 16 mm² for the supply of electronics on the implement

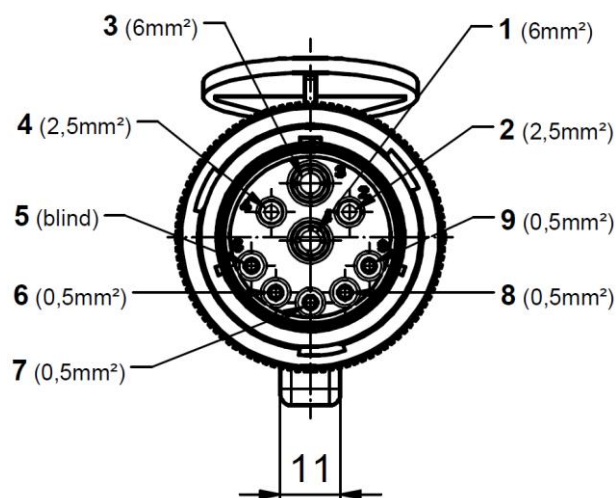
Shielded Cable

Reduced susceptibility to influences



Illustration 1: b-ISOBUS Cable with captive cover

Pin Assignment



PIN	Contact	Wire cross section	Wire color	Name
1	A	6 / 10 / 16 mm ²	Black	GND
2	B	2,5 mm ²	Black	ECU_GND
3	A	6 / 10 / 16 mm ²	Red	PWR
4	B	2,5 mm ²	Red	ECU_PWR
5	C	n.c.		TBC_DIS
6	C	0,5 mm ²	Red	TBC_PWR
7	C	0,5 mm ²	Black	TBC_RTN
8	C	0,5 mm ²	Yellow	CAN_H
9	C	0,5 mm ²	Green	CAN_L

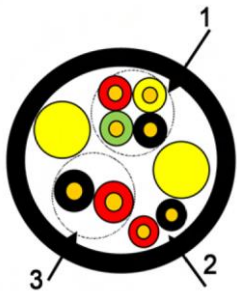
Technical specification

Current rating	6 / 10 / 16mm ² : 25 / 35 / 60A at 40°C 2,5mm ² : 15 A bei 40°C 0,5mm ² : 5 A bei 40°C
Protection class	IP 67, in mated condition
Ambient temperature	-40°C ... +85°C
Connector	
Ambient temperature	fixed: -40°C ... +85°C
Cable	moved: -20°C ... +85°C
Mating cycles	> 100
Wire cross section	2 x 2,5 / 6 / 10mm ² 2 x 2,5mm ² 4 x 0,5mm ²
Housing	Deutsch HDP26-24-91SE-L015, Black

Materials

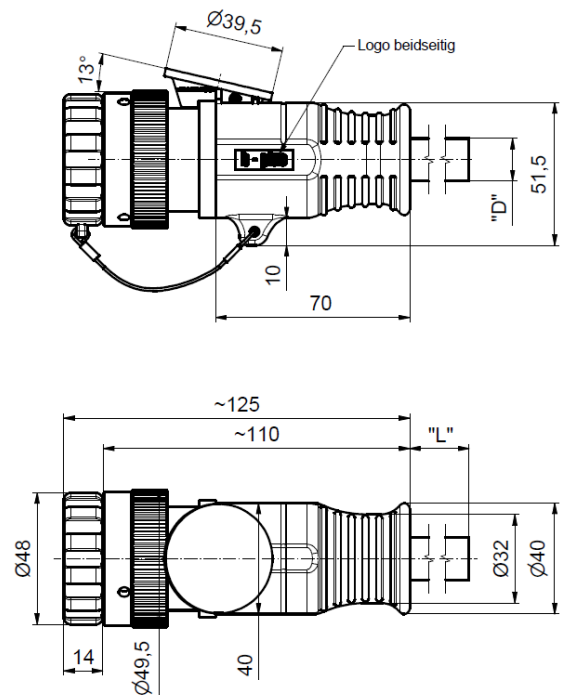
Contact	CuZn
Contact plating	Ni
Contact carrier	Thermoplast
Landing plate	PA6.6 UL94 V-0, Black
Protective cover	PA6.6 UL94 V-0, Black
Overmolding	TPU, UL94 V-0, Black
Sealing	Silicon

Cable structure



- 1**
Wire bundle (4 Li9Y 0,50 mm²) nom. 75 Ohm (L/L touching)*
Wire isolation: PP
Wire colors: Black, Yellow, Green, Red
- 2**
Wires LiY 2,50 mm² Wire isolation: PVC
Wire colors: Black, Red
- 3**
Wires LiY 6 / 10 / 16 mm² Wire isolation: PVC
Wire color: Black, Red

Dimensional drawing



Ordering information

Order-no.	Description
B12093-ISO-001-0500	ISOBUS-Cable - Socket 5m TPE-U(PUR) (4x0,5 / 2x2,5 / 2x6.0mm ²) open end
B12093-ISO-001-1000	ISOBUS-Cable - Socket 10m TPE-U(PUR) (4x0,5 / 2x2,5 / 2x6.0mm ²) open end
B12093-ISO-011-0500	ISOBUS-Cable - Socket 5m TPE-U(PUR) (4x0,5 / 2x2,5 / 2x10.0mm ²) open end
B12093-ISO-011-1000	ISOBUS-Cable - Socket 10m TPE-U(PUR) (4x0,5 / 2x2,5 / 2x10.0mm ²) open end
B12093-ISO-0Z1-XXXX	X cable length in cm - Z cross section of power wire (0 = 2x6.0mm ² - Standard, 1 = 2x10.0mm ² , 2 = 2x16mm ²)

Alle Daten bei 25°C Umgebungstemperatur, falls nicht anders angegeben. / All data at nominal input and 25° C ambient temperature, if not marked otherwise. * Alle Daten dienen nur Informationszwecken und sind nicht als zugesicherte Eigenschaften aufzufassen. / All data for information purposes only, no assured characteristics. * Technische Änderungen ohne vorherige Ankündigung sowie Irrtümer vorbehalten. / Technical modifications without notice and errors reserved. * Belastung mit Extremwerten über einen längeren Zeitraum kann die Zuverlässigkeit beeinflussen. / Strain with extreme values for a longer period may affect the reliability. * Alle Trademarks und Logos sind Eigentum der jeweiligen Unternehmen. / All trademarks and logos are property of the concerning companies. In case of doubts the German version of the document is binding. © b-plus GmbH • Nov-19 • Version 2.0