

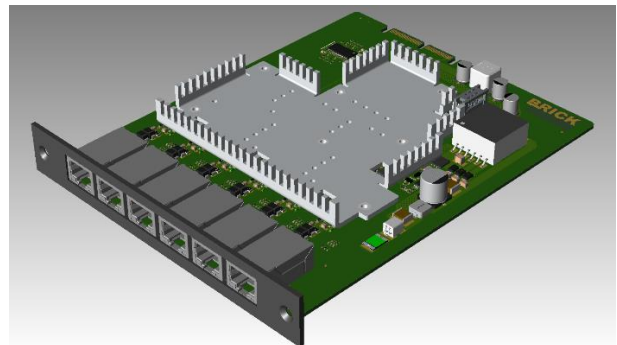
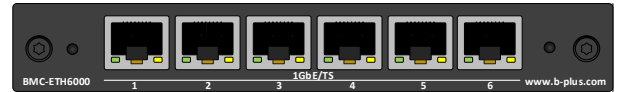
## BRICK BMC-ETH6000

### Product overview

#### BRICK Measurement Card BMC

**Time-synchronized measurement card with 6x 1GbE 802.1AS ports and power over Ethernet support**

- 6 Port RJ45 1GbE 1000Base-T IEEE1588
- Managed PoE with max. 28W power delivery (Class 3 max. 15,4W on 1 port)
- Fully supported from b-plus XTSS time synchronization service
- Integrated in BRICK platform time synchronization service platform
- Time synchronization IEEE1588, 802.1AS, PTP
- Direct use of Ethernet Sensors and cameras
- Card can be used in active cooled BMC Add-On
- Extended operation temp from -25° to 70°
- Power supply direct from BRICK CORE COM
- AVETO™ ready
- Dimension 148x172x22 mm
- Driver support for Windows 64 und Linux 64









BRICK Measurement Card BMC-ETH6000



BRICK2 BMC with ETH-6000 and VB2

### Highlights

 <p>integrated in BRICK recording system</p>	 <p>6 1GbE Ethernet Ports IEEE 802.3af PoE</p>	 <p>Time synchronization based on IEEE 802.1AS and gPTP</p>	 <p>Extended operating temperature</p>	 <p>expandable modular system</p>	 <p>AVETO toolchain ready</p>
---	---	--	---	--	--

Alle Daten bei 25°C Umgebungstemperatur, falls nicht anders angegeben. / All data at nominal input and 25° C ambient temperature, if not marked otherwise. ▪ Alle Daten dienen nur Informationszwecken und sind nicht als zugesicherte Eigenschaften aufzufassen. / All data for information purposes only, no assured characteristics. ▪ Technische Änderungen ohne vorherige Ankündigung sowie Irrtümer vorbehalten. / Technical modifications without notice and errors reserved. ▪ Belastung mit Extremwerten über einen längeren Zeitraum kann die Zuverlässigkeit beeinflussen. / Strain with extreme values for a longer period may affect the reliability. ▪ Alle Trademarks und Logos sind Eigentum der jeweiligen Unternehmen. / All trademarks and logos are property of the concerning companies. In case of doubts the German version of the document is binding. © b-plus GmbH • 19.10.2021 17:31 • Version: 1.12

### Technical information

#### Interfaces

- 6x RJ45 1GbE, with dedicated controller for each port

#### Time synchronization

- HW based time synchronization of each dedicated Ethernet port
- Supported by the BRICK hardware platform time synchronization system (XTSS Rev. 4.00 or higher)
- Setup via XTSS configuration tool
- Time distribution to external devices (need BRICK XTSS-TR/UDP feature)

#### Power over Ethernet (PoE)

- Intelligent PSE (power sourcing device) management for all ports
- Supported IEEE 802.3af classes:

PoE delivery	Class 0/3 PD 15,4W	Class 2 PD 7W	Class 1 PD 4W
Device	12,95W	6,49W	3,84W
powered devices	1	Up to 4	Up to 6

- PoE limit (Class 3 max. 15,4W on 1port, 28W overall)

#### System Add On

- Requires a BRICK hardware configuration with BMC Add On 22mm
- Max. 1 BMC-ETH6000 in one BRICK system

#### Software support

- 64Bit Windows 10 IOT Enterprise
- Linux 64Bit
- Other OS on request

#### High-End-ADAS Frameworks

- Application ready for the AVETO toolchain and 3<sup>rd</sup> party frameworks (API needs to be integrated)

#### Power Supply

- direct powered form BRICK / BRICK2 system
- Up to 40W max. power consumption, (@ full PoE)

#### Operating Temperature Range

- 25°C to +70°C

#### Housing BRICK with BMC Add on

- Standard BRICK System (BMC 22mm Add on):  
B:320mm, H:88mm, T:250mm

#### Certification (BRICK System)

- CE / FCC / VCCI / ICES / KC  
(depending on based system)
- RoHS / REACH

### Name

### Order-no.

### Description

BRICK Measurement Card BMC-ETH 6000	B17575-BMC-ETH-6000	Time-synchronized measurement card with 6 1GbE 802.1AS ports and power over Ethernet support
BRICK CORE COM6820EQ	B17575-BCC-107-BA00	High Performance Embedded Communication and recording Unit, 5x 1GbE and 2x 10GbE, 2x Add slot for BMC modules
BRICK2 BMC	B17049-B2C-002-0000	BRICK2 measurement and Recording platform for ADAS and AD development