

NETLion

Product overview

NETLion is a development tool for BroadR-Reach® networks. It supports the user for logging and analyzing of data traffic or converts BroadR-Reach® physics to 100BASE-TX Ethernet, which is common in the IT area.

Operating Mode Dual Media Converter

Up to two BroadR-Reach® Signals are converted to 100BASE-TX Ethernet, which is common in the IT area.

Operating Mode Network Tap

During the operating mode Network Tap data is decoupled of both BroadR-Reach® line ends and transmitted on the two 100BASE-TX interfaces. The network tap operates on layer 1 and inserts a small symmetric and constant delay of about 1.2 µs.

Discover errors

With the NETLion Configurator Software you can see signal quality, occurring errors, as well as the status of the data traffic.

Additionally NETLion includes a filter for ADTF (Automotive Data and Time-Triggered Framework), where you can acquire and view the diagnosis data. NETLion has a Configuration Ethernet Port where you can get this data.

For use in the automotive area

NETLion can be used for the development desk and even for use in harsh environments. Power supply and operating temperature range are designed for the permanent integration in such environments.

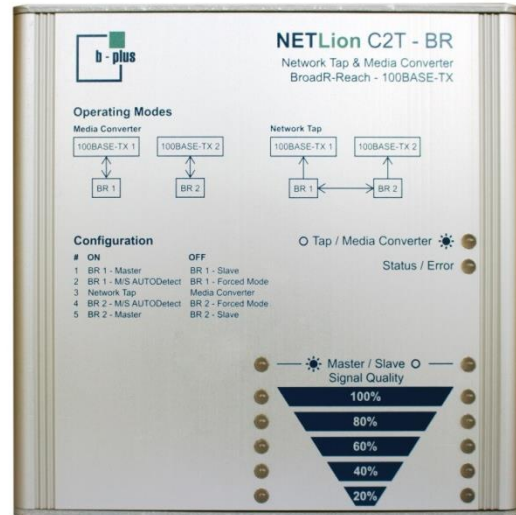


Illustration 1: Exemplary illustration of NETLion

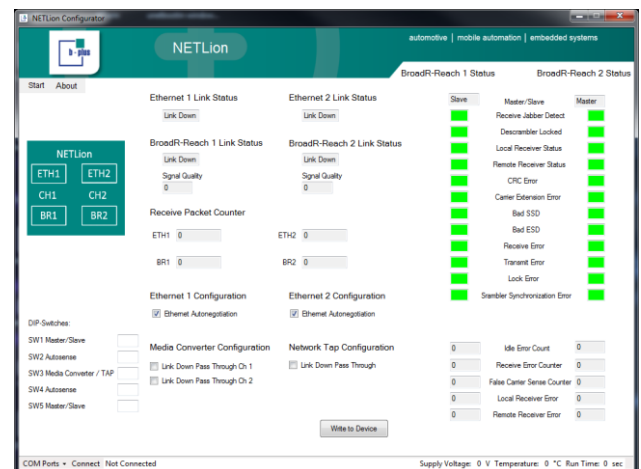
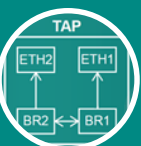


Illustration 2: NETLion Configurator

Function modes and highlights



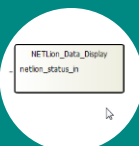
2 devices in one

- Media Converter
- BroadR-Reach® network tap



LEDs for

- BroadR-Reach® Signal Quality
- Operation Mode
- Master/Slave



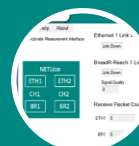
ADTF Filter

- For the view of diagnosis data in measurement setups



Robust Hardware

- Extended operating temperature range
- Wide range power supply



Simple Configuration

- Basic configuration without PC (DIP switches)
- Extended Configuration and diagnosis via NETLion Configurator

Network Tap & Media Converter BroadR-Reach® – 100BASE-TX

Technical data

Operating temperature range

-40°C..+75 °C

Power Supply

8V..32V

Certification

EN55022-EN55024, EN55032, EN7637-2

Mechanical dimensions

104mm x 105mm x 26mm

Interfaces

Number	Description	Function
2	BroadR-Reach®	Data traffic according operating mode
2	100BASE-TX	Data traffic according operating mode
1	Ethernet	Configuration and analysis (Measurement)
1	USB	Configuration and analysis (USB Client)

Side view



Illustration 3: 100Base-TX interfaces, Configuration interfaces USB and Ethernet



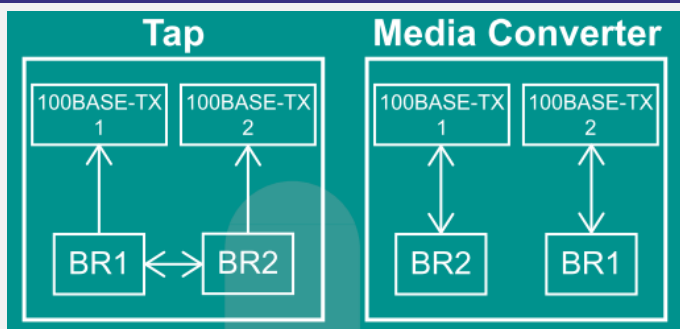
Illustration 4: Interfaces for power, DIP switches for configuration without SW-Tool and BroadR-Reach® interfaces

Possible DIP switch configurations

Master / Slave / AutoDetect (separate per channel)

Operation mode: Tap / Media converter

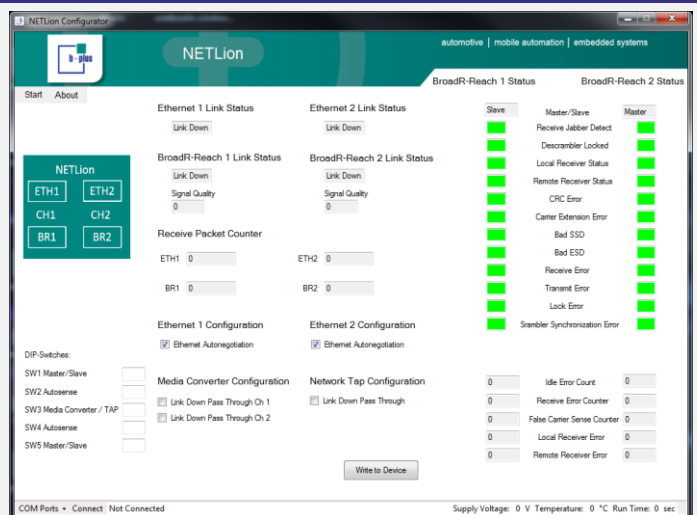
Block Diagram of the system



Conversion of two BroadR-Reach® signals in standard 100BASE-TX Ethernet signals (bi-directional)

Decoupling of data of one BroadR-Reach® line in both directions

- Without influence of the communication
- Optional Link Down pass-through



Ordering information

Name	Article-no.	Description
NETLion C2T - BR	B18000-NEL-001-0001	Network Tap & Dual Media Converter BroadR-Reach® - 100BASE-TX
NETLion C2 - BR	B18000-NEL-001-0002	Dual Media Converter BroadR-Reach® - 100BASE-TX
NETLion ADTF Filter		ADTF Filter for NETLion