

USBTucan

Product overview

USBTucan is an USB I/O Box with digital In/Outputs, analog Inputs and a galvanic separated CAN Interface.

It is ideal for use in an laboratory as development and test tool, as well as for mounting in machines and test benches.

Multi-Instances

Various USBTucans can be connected and used on one host system

Multi-Targets

More applications can use USBTucan and its interfaces at the same time

High performance CAN interface

1 Mbaud data throughput

Wide range of software support

- Drivers for Windows and Linux
- ADTF filter available

Display & Logging Software

- Logging of CAN and I/O data
- Monitor Messages
- Send Messages
- View and send I/Os



Illustration 1: Exemplary illustration of USBTucan

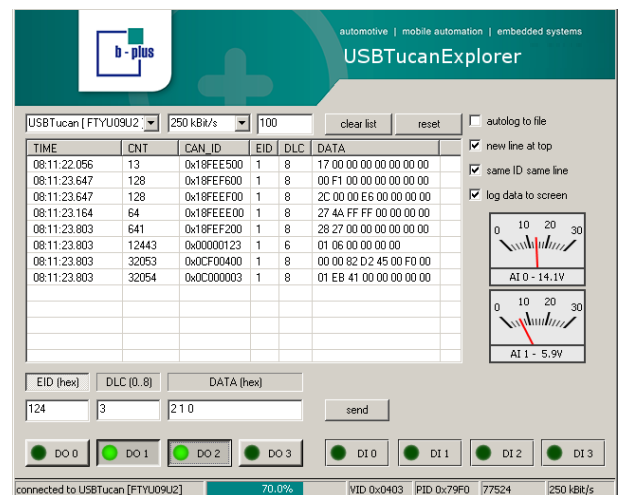


Illustration 2: Exemplary illustration of USBTucan Explorer

The reliable CAN interface with digital I/Os and analog inputs

Operating temperature range from -40 up to +75°C

CAN interface Switchable Termination

Robust Housing High USB pull out force

Digital inputs 4x
Digital outputs 4x
Analog inputs 2x

I/O API + Demo Software

Aller Daten bei 25°C Umgebungstemperatur, falls nicht anders angegeben. / All data at nominal input and 25° C ambient temperature, if not marked otherwise. • Alle Daten dienen nur Informationszwecken und sind nicht als zugesicherte Eigenschaften aufzufassen. / All data for information purposes only, no assured characteristics. • Technische Änderungen ohne vorherige Ankündigung sowie Irrtümer vorbehalten. / Technical modifications without notice and errors reserved. • Belastung mit Extremwerten über einen längeren Zeitraum kann die Zuverlässigkeit beeinflussen. / Strain with extreme values for a longer period may affect the reliability. • Alle Trademarks und Logos sind Eigentum der jeweiligen Unternehmen. / All trademarks and logos are property of the concerning companies. In case of doubts the German version of the document is binding. © b-plus GmbH • Nov-15 • Version: 0.4

Technical information

Interfaces

- 1x USB – Connection and power supply from the host system (completely galvanic separated)
- 4x Digital-IN - Low-active
- 4x Digital-OUT
 - max. 1,0 A per channel
 - needs own power supply from 5-32 V via VIO
 - Condition of Digital-IN and Digital-OUT is indicated via LEDs
- 2x Analog-IN (0-32V, Resolution 12 BIT)
- CAN Interface (Switchable Termination)

Environmental specification

- Operating temperature range -40°C up to 75°C

Specification according to standards

IT environment:

- EN 55022 (Class B)
- EN 55032 (Class B)
- EN 55024

Industrial environment:

- EN 61000-6-3
- EN 61000-6-2

Laboratory operation:

- EN 61326-1

FCC USA:

- FCC CLASS A (Industrial Environment)

VCCI Japan:

- VCCI CLASS A (Industrial Environment)

Side view

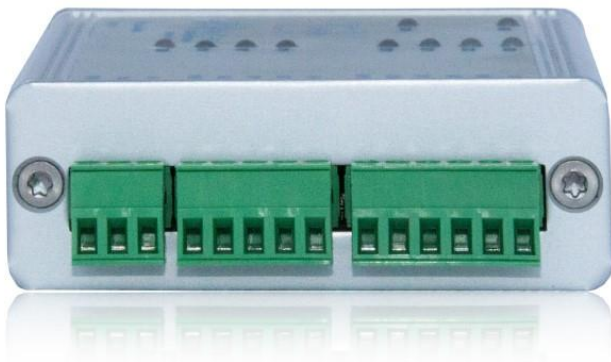


Illustration 3: Connectors for in and outputs



Illustration 4: USB Supply and SUBD-0 connector for termination switches

Ordering information

| Name | Order-no. | Description |
|--------------|---------------------|---|
| USBTucan Set | B18001-U2C-001-0001 | CAN & IO Interface Box <ul style="list-style-type: none"> ▪ 1x USB – Connection to the host ▪ 4x Digital-In ▪ 4x Digital-Out ▪ 2x Analog-In ▪ 1x CAN Software <ul style="list-style-type: none"> ▪ SIODlapi ▪ SIODlservice application ▪ USBTucan Explorer Documentation, USB cable |